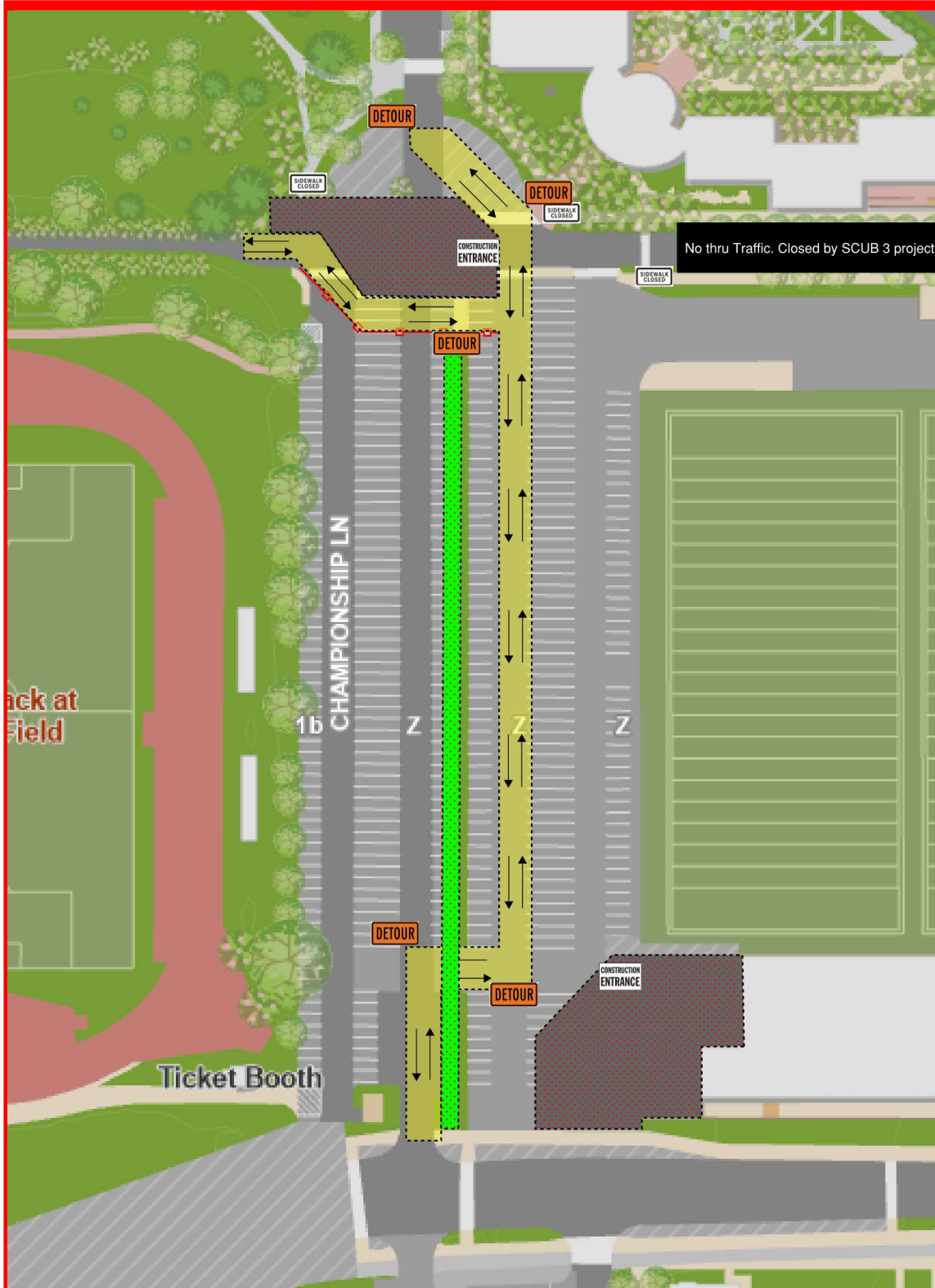
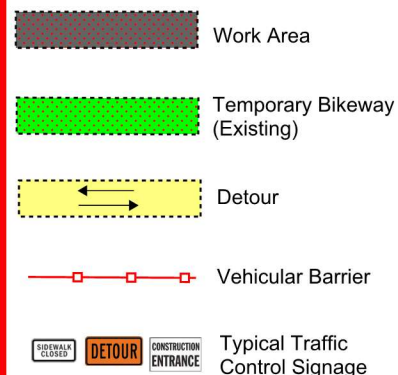




Riggs Intersection Water Line Installation [Part 1/2]

Logistics Plan



Notification Narrative:

Construction Activities: 5/27/2025 thru 6/20/2025

Presidential Drive: Traffic to detour through parking spaces to make a connection to Lot Z Drive Lane

Lot Z Drive Lane: Two way traffic to remain open

Bikeway Segment 1-B: To be re-routed with vehicular traffic

Health and Human Sciences
Complex