

FACILITIES COUNCIL

MEETING DATE: 5 November, 2019

SUMMARY: **Facilities Master Plan 2011-2030** – Annual update for 2019 is submitted for the information of the Council.

COMMENTS:

- The Facilities Master Plan 2011-2030 (FMP) maps and spreadsheets serve as primary reference materials for the FMP ad hoc implementation committees, the Facilities Council, Facilities Advisory Committee, Architecture Landscape Review Board, campus leadership, staff, project architectural/engineering teams, public-private partnerships, and as general information about University plans.
- In addition to the annual updates (since 2012), a mid-decade (5-year) update was completed in December, 2017.
- Annual FMP updates, as part of the University's Capital Budget process, will ensure that the maps and spreadsheets are current.
- This annual update for 2019 reflects UMD's FY 2021-2030 Capital Improvement Program and FY 2020-2029 System-Funded Construction Program and includes the following changes (from the 2018 annual update):
 - Projects Completed:
 - NE8 Brendan Iribe Center for Computer Science and Innovation (432) – Spring, 2019.
 - Landscape / Transportation Projects Completed:
 - CC_L3c McKeldin Mall Improvements (Phase 3).
 - Buildings Demolished:
 - None.
 - Projects Modified (refer to Project Lists)
 - Period 2 New Construction
 - N2 Paint Branch Parking Garage (3 phases – vehicle quantities)
 - N8 Xfinity Basketball Performance Center – 60,000 gsf
 - NE2 Brain and Behavior Research Building – Phase 1b (area reduction due to Phase 1a fit-out)
 - NE10 Academic Building (placeholder – formerly the Div IT Building)
 - S1 Architecture Building (area reduction)

W3b New Cole Fieldhouse: (Phase 2 split into construction of Athletic spaces and Academic shell with future fit-out under Renovations; outdoor practice fields follow fit-out completion. Refer to NE2 Brain and Behavior Research Building Phase 1b)

- Projects Added (refer to Project Lists)
 - Period 1 Renovation
New Cole Fieldhouse (162) (Phase 1a – Sports Medicine academic fit-out. Refer to W3b, above)
 - Period 1 Landscape & Transportation
E_L5 The Hall Pocket Park and Streetscape
 - Period 2 Landscape and Transportation Improvements
CC_T5 New *VeloRide* shared bicycle + scooter system (replaces *Zagster* mBike system)
 - Period 2 Demolition
Golf Course Maintenance Office (167)
Plant O&M Storage (213, 214)
Indoor Practice Building (309, former Tennis Bubble)
Golf Course maintenance buildings (312, 313, 314, 318, 319, 320)
Grounds Storage (423, near Preinkert Hall).

- Projects moved from Period 1 to Period 2 New Construction:
 - CC5 School of Public Policy Building
 - E5 Day Care at Friends School
 - GC1 Indoor Driving Range (Tennis Bubble replacement)
 - NE17 Idea Factory
 - NW6 Replace Ellicott Dining Hall
 - NW7 New Residence Halls (2 @ 450 beds each).

- Projects Removed from consideration (refer to Project Lists)
 - Period 1 New Construction
CC6 Parking Garage

- The annual update for 2019 is available on the University website <https://www.facilities.umd.edu/sitepages/FPmasterplan.aspx>, as well as in print version, by request.

AREA AFFECTED: UMD Campus

ATTACHMENTS: Project List
FMP 2011-2030 maps – attachments A, B, C, & D

SUBMITTED BY: Daniel FC Hayes, Department of Facilities Planning

Project List

January 1, 2011 - June 30, 2019

Completed New Construction				
Building #	Project	District	GSF	Date Completed
039	Van Munching Hall Addition/Renovation	S	15,282	2011
419	Oakland Hall	NW	233,436	2011
164	University House	W	15,133	2012
424	Shuttle Bus Facility	N	10,947	2012
426	Heavy Equipment Building	N	7,136	2012
415	Physical Sciences Complex -Phase 1	NE	172,986	2013
428	Wye Oak Building	N	13,520	2013
425	Prince Frederick Hall	S	186,849	2014
226	Edward St. John Learning and Teaching Center	CC	180,744	2017
429	A. James Clark Hall	NE	184,715	2017
E1	Discovery District Mixed-use Development: Hotel and Garage	E	775,450	2017
162	New Cole Fieldhouse - Indoor Practice Facility	W	112,896	2017
432	Brendan Iribe Center	NE	240,921	2019
Total			2,150,016	

Completed Renovation				
Building #	Project	District	GSF	Date Completed
059	Chincoteague Hall	CC	22,647	2012
089	Engineering Laboratory Building (partial)	NE	5,800	2012
099	Bel Air Hall	NW	20,090	2012
115	A.V. Williams Building (partial)	NE	114,118	2012
171	House 171	E	10,445	2012
176	House 176	E	11,833	2012
810	Severn Building - Phase 1 And 1A (partial)	OP	53,677	2012
007	Pocomoke Building	E	30,346	2013
091	Chemistry Building (partial)	NE	40,500	2013
098	Centreville Hall	NW	139,888	2013
254	Elkton Hall	NW	115,658	2013
077	Main Administration Building (partial)	CC	41,299	2014
810	Severn Building - Phase 3 (partial)	OP	38,900	2015
383	Paint Branch Building	OP	38,280	2016
141	Tawes Hall (partial)	W	31,550	2015
810	Severn Building (partial)	OP	22,080	2016
810	Severn Building - Phase 2 (partial)	OP	49,230	2016
073	H.J. Patterson Hall (partial)	CC	56,600	2017
074	Holzapfel Hall	CC	27,400	2017
064	Dorchester Hall	CC	35,436	2018
077	Main Administration Building (partial)	CC	6,700	2018

255	School of Public Health (partial)	NW	14,858	2018
096	Cambridge Hall	NW	55,792	2018
006	Building 006	E	15,405	2019
Total			912,477	

Completed Landscape and Transportation				
Project_ID	Project	District	Project Type	Date Completed
W_L1	Maryland Stadium Field Replacement (artificial turf)	W	Auxiliary	2012
CC_T3	Sharrows & Signage on Campus Wide Roadway	CC	Transportation	2013
E_L3a	Centennial Garden (Fraternity Row)	E	Landscape	2014
CC_L3a	McKeldin Mall (partial)	CC	Landscape	2016
CC_T4	Zagster Bikeshare	CC	Transportation	2016
CC_L3b	McKeldin Mall Improvements (phased)	CC	Landscape	2017
NW_L6	Relocated Tennis Courts (from New Cole Fieldhouse)	NW	Sports Field	2018
CC_L3c	McKeldin Mall Improvements (phase 3)	CC	Landscape	2019

Completed Demolition				
Building #	Project	District	Building GSF	Date Completed
050	Grounds Office Building	N	3,244	2012
066	West Education Annex	S	2,572	2012
002	Harrison Laboratory	E	56,246	2014
012	Plant Operations & Maintenance Shop	E	11,832	2014
013	Shuttle Bus Facility	E	5,862	2014
055	Plant Operations & Maintenance Storage	E	680	2014
075	Shriver Laboratory	CC	22,315	2014
100	Plant Operations & Maintenance Shop	E	1,829	2014
101	Plant Operations & Maintenance Shop	E	1,840	2014
112	Shuttle Bus Trailer	E	603	2014
208	Temporary Building	E	666	2014
215	Building Services Operations	E	3,342	2014
216	Heavy Equipment Building	E	3,267	2014
217	Solid Waste Storage	E	682	2014
343	Campus Mail Facility	E	4,225	2014
385	Pest Control Trailer	E	610	2014
410	Shuttle Bus Trailer	E	546	2014
018	Police Substation (7505 Yale Avenue)	E	3,853	2015
200	Storage Facility	W	269	2015
092	Potomac Building	NE	17,623	2018
212	Plant Operations & Maintenance Shop 3	E	2,114	2018
332	Anacostia Building	N	1,787	2018
431	Metzerott House (4109)	N	1,869	2018
811	Knox Road Building	S	3,332	2018
Total			151,208	

Planned New Construction				
July 2019 - December 2020				
Site	Building	District	GSF	Project Type
CC7	H. J. Patterson Mechanical Addition	CC	1,200	Academic
W3b	New Cole Fieldhouse Football Operations and Academic/ Research	W	325,710	Auxiliary/ Academic
Total			326,910	

Planned New Construction				
January 2021 - December 2030				
Site	Building	District	GSF	Project Type
CC2	Benjamin Building/Center for Young Children	CC	95,700	Academic
CC5	School of Public Policy Building	CC	69,700	Academic
E2	Mixed-use Development: Discovery District: Phase 2	DD	279,400	Discovery District
E3	Day Care Facility	DD	13,500	Auxiliary
E4	Mixed-use Development: Leonardtown-Physical Distribution Center: Phase 3	DD	2,080,800	Discovery District
E4A	Mixed-use Development: replaces Building 003	DD	TBD	Discovery District
E5	Day Care Center at Friends School	DD	TBD	Auxiliary
GC1	Indoor Driving Range	GC	1,000	Auxiliary
GC2	Golf Course Maintenance	GC	10,400	Auxiliary
GC3	B&LM Grounds Maintenance Replacement	GC	20,000	Academic Support
N2	Paint Branch Parking Garage - Phase 1 (1000 spaces)	N	264,000	Auxiliary
N2a	Paint Branch Parking Garage - Phase 2 (1000 spaces)	N	264,000	Auxiliary
N2b	Paint Branch Parking Garage - Phase 3 (1000 spaces)	N	264,000	Auxiliary
N4	Electric Substation	N	5,400	Utility
N5	Environmental Service Facility Expansion	N	10,100	Academic Support
N6	Xfinity Center Office Expansion	N	7,020	Auxiliary
N7	Field Hockey and Lacrosse Complex Expansion	N	5,800	Auxiliary
N8	Xfinity Center Addition (Basketball Performance Center)	N	60,000	Auxiliary
N9	Xfinity Center Addition (Gymnastics Practice Facility)	N	15,000	Auxiliary
N10	Robert E. Taylor Stadium Expansion	N	2,640	Auxiliary
N13	New Kehoe Track Facility	N	4,366	Auxiliary
NE1	Campus Farm Master Plan - New Buildings and Renovations	NE	41,800	Academic

NE2	Brain and Behavior Research Building- Phase 1b	NE	74,800	Academic
NE3	Brain and Behavior Research Building- Phase2	NE	102,000	Academic
NE5	Physical Sciences Complex - Phase 2	NE	106,300	Academic
NE7	Nutrition & Food Sciences	NE	94,000	Academic
NE7a	AGNR Expansion	NE	35,600	Academic
NE9	Physical Sciences Complex - Phase 3	NE	102,400	Academic
NE10	Academic	NE	100,000	Academic Support
NE11	A. James Clark Hall - Phase 2	NE	54,500	Academic
NE12	Aerospace Engineering	NE	106,800	Academic
NE13	Chemistry - Wing 1 Replacement	NE	105,500	Academic
NE15	SCUB Expansion	NE	8,540	Auxiliary
NE16	Engineering Annex	NE	182,000	Academic
NE17	Idea Factory	NE	60,000	Academic
NE18	New Engineering Building	NE	200,000	Academic
NW1	School of Public Health - Addition/Conversion - Phase 2	NW	27,299	Academic
NW3	Undergraduate Housing 1 (515 Beds)	NW	169,950	Auxiliary
NW4	Undergraduate Housing 2 (515 Beds)	NW	169,950	Auxiliary
NW5	Replacement Housing (650 Beds) + Residential Facilities Office Relocation	NW	240,300	Auxiliary
NW6	Replace Ellicott Dining Hall	NW	57,750	Auxiliary
NW7	New Residence Halls (900 beds)	NW	303,500	Auxiliary
OP1	Chesapeake Bay Mesocosm (near Avrum Gudelsky Veterinary Center)	OP	8,000	Academic
S1	Architecture Building Addition	S	28,500	Academic
S2	Academic	S	79,800	Academic
S3	Public Protection and Security Research Building, SCUB Expansion and Site Development	S	134,000	Academic
S5	Visual Arts and Cultures Building	S	112,300	Academic
S7	South Campus Recreation Building	S	70,000	Auxiliary
S8	Worcester Hall Replacement (450 beds), SCUB Expansion and Site Development	S	135,000	Auxiliary
S9	Behavioral and Social Sciences Research Building	S	120,000	Academic
S10	Expand and Renovate Annapolis Hall	S	32,900	Auxiliary
W2	Ludwig Soccer Stadium Upgrades (12,000 to 18,000 seats)	W	105,700	Auxiliary
W4	Shipley Field Upgrades	W	16,900	Auxiliary
W5	Gossett Football Team House Addition	W	7,500	Auxiliary
W6	Campus Drive Parking Garage (2,200 spaces)	W	660,000	Auxiliary

Total 7,326,415

**Total
Period 1
and
Period 2 7,653,325**

Planned Renovations			
July 2018- December 2020			
Building #	Building	District	GSF
011	Building 011 (Motor Transportation Building)	E	9,016
091	Chemistry Building	NE	27,000
147	Hornbake Library (partial)	NE	7,500
162	Brain & Behavior phase 1a (Cole fit-out)	W	31,250
256	Ellicott Hall	NW	123,247
Subtotal			198,013

Planned Renovations			
January 2021 - December 2030			
Building #	Building	District	GSF
009	Memorial Chapel	CC	26,272
017	Cecil Hall	S	39,655
034	Jimenez Hall	CC	65,321
039	Van Munching Hall (includes former School of Public Policy space)	S	292,386
040	Morrill Hall	CC	16,277
042	Tydings Hall	CC	101,945
043	Taliaferro Hall	CC	47,870
046	Marie Mount Hall	CC	113,268
047	Woods Hall	CC	24,470
048	Francis Scott Key Hall	CC	52,548
052	Clarence M. Mitchell Jr. Building	CC	45,212
071	Lee Building	CC	42,185
073	H.J. Patterson Hall (partial) wing 2	CC	46,500
076	Symons Hall (partial)	CC	78,248
077	Main Administration Building (partial)	CC	41,299
078	Reckord Armory (partial)	CC	78,615
079	Turner Hall	CC	25,666
080	Rosborough Inn	CC	11,558
081	Wind Tunnel Building	NE	31,567
082	John S. Toll Physics Building (partial)	NE	230,558
082	John S. Toll Physics Building (south wing)	NE	74,733
084	William E. Kirwan Hall	NE	138,852
108	Horse Barn	NE	6,919
109	Sheep Barn	NE	6,152
110	Cattle Barn	NE	8,064
115	A.V. Williams Building (partial)	NE	236,044
121	Chestertown Hall	NW	29,090
122	Cumberland Hall	NW	124,486
142	Animal Sciences/Agriculture Engineering Building	NE	195,195
143	Benjamin Building	CC	112,225
144	Biology-Psychology Building	NE	242,067

145	Architecture Building	S	7,800
163	New Cole Fieldhouse - Headhouse	W	29,000
231	Microbiology Building	NE	88,285
237	Geology Building	NE	22,762
252	Denton Hall	NW	115,108
253	Easton Hall	NW	115,533
257	Ellicott Dining Hall	NW	48,280
258	Hagerstown Hall	NW	119,561
259	La Plata Hall	NW	132,943
296	Biomolecular Sciences Building (partial)	NE	35,600
309	Indoor Practice Facility	GC	20,963
362	Maryland Stadium Concessions 1	W	5,545
363	Maryland Stadium Concessions 2	W	2,663
364	Maryland Stadium Concessions 3	W	2,705
365	Maryland Stadium Concessions 4	W	11,193
367	Maryland Stadium Concessions 5	W	9,159
379	Gossett Football Team House	W	63,914

3,416,259

Total Both Periods 3,614,272

Planned Landscape and Transportation July 2019 - December 2020		
Site	Project	Project Type
CC_L1	Rossborough Inn Gardens Improvements	Landscape
CC_L2	McKeldin Library Hardscape and Landscape	Landscape
CC_L4	South Chapel Lawn Enhancements	Landscape
CC_L5	Chapel Fields Improvements	Landscape
CC_L6	South Gate Landscape Improvements	Landscape
CC_T1	Campus Drive at Anne Arundel: Create Pedestrian/Bike Paths	Transportation
CC_T2	Purple Line and Streetscape / Landscape Improvements	Transportation
CC_T5	Veo-ride - Bikeshare (replace Zagster)	Transportation
E_L1	Route 1 Pedestrian Median Improvements (to be implemented by Maryland State Highway Administration)	Landscape
E_L2	Fraternity Row - multi-field layout, artificial turf (4 fields, 270' x 660' overall)	Sports Field
E_L3b	Centennial Garden (Fraternity Row) Partial	Landscape
E_L5	The Hall Pocket Park	Landscape
E_T1	Purple Line and Streetscape/Landscape Improvements	Transportation
NW_L3	Campus Creek Trail and Ecosystem Enhancements	Landscape
NW_L7	Housing and Dining Streetscape and Site Improvements	Landscape & Transportation
W_T1	Lot 1 Road/Pedestrian/Bicycle Safety Improvements	Transportation
W_T2	Campus Drive West Gateway Enhancements	Landscape & Transportation
W_T4	Purple Line and Streetscape/Landscape Improvements	Transportation

Planned Landscape and Transportation January 2021 - December 2030		
Site	Project	Project Type
CC_L7	Garden of Reflection and Remembrance - Phase 2	Landscape
CC_L8	Morrill Hall Quad Improvements	Landscape
CC_L9	Anne Arundel Green	Landscape
CC_L10	Lot Y Conversion and Landscape Improvements	Landscape
CC_L12	Tawes Plaza Improvements	Landscape

E_L4	East Campus - Phase 2 Park	Landscape
GC_L1	Holman Short Game Expansion	Sports Field
GC_L2	Golf Course Ponds and Storm Water Management Improvements	Landscape
GC_L3	Perimeter Landscape Improvements University Boulevard and Adelphi Road	Landscape
N_L1	Paint Branch Drive Gateway Enhancements	Landscape & Transportation
N_L2	Recreation Fields on Paint Branch Parking Garage Roof	Sports Field
N_L3	Terrapin Trail Retention Pond Improvements	Landscape
N_L4	Paint Branch Drive Wooded Wetlands Improvements	Landscape
N_L5	Wooded Hillock Conservation Garden and Perimeter Landscape Improvements University Boulevard	Landscape
N_L6	Relocate Kehoe Track and Throwing Area	Sports Field
N_L7	ICA/RecWell Field (Infield of Track)	Sports Field
N_T1	Pedestrian/Bicycle Improvements at Xfinity Center	Transportation
NE_L1	Hornbake Plaza Improvements	Landscape
NE_L2	Bioretention Garden Improvements (Technology Drive)	Landscape
NE_L3	Northgate Park (West) Landscape Improvements	Landscape
NE_L4	Animal Sciences Building Courtyard Improvements	Landscape
NE_L5	Kim Engineering Building Plaza Improvements	Landscape
NE_L6	William E. Kirwan Hall Courtyard Improvements	Landscape
NE_L7	Outdoor Volleyball Courts (4 sand or artificial turf, 50'x80' each, including buffer space)	Sports Field
NE_L8	Farm Master Plan Fields/Pastures	Landscape
NE_L13	Chemistry Wing 1 landscape	Landscape
NE_T1	Regents Drive Improvements	Transportation
NE_T2	Pedestrian/Bicycle Improvements at Stadium Drive East	Transportation
NE_T3	Paint Branch Drive Improvements	Transportation
NE_T4	Bicycle Connection and Pedestrian Bridge at A.V. Williams Building, North	Transportation
NW_L1	School of Public Health Building Garden	Landscape
NW_L2	Hagerstown Woods Improvements	Landscape
NW_L4	Multi-Sport Recreation Field (220' x 150', artificial turf)	Sports Field

NW_L5	Volleyball and/or Basketball Courts	Sports Field
NWL7	Housing and Dining Landscape and Transportation Improvements	Landscape
OP_L1	Greenmead Drive Entry Enhancements	Landscape
OP_L2	Campus Tree Nursery	Landscape
OP_L3	Avrum Gudelsky Veterinary Center Retention Pond Improvements	Landscape
OP_L4	Wetland Marsh Nature Walk and Perimeter Landscape Improvements University Boulevard	Landscape
OP_T1	Bicycle Trail Improvements	Transportation
S_L1	Lehigh Road Gateway and Pedestrian Enhancements	Landscape & Transportation
S_T1	East-West Pedestrian Boulevard Improvements	Transportation
W_L2	Garden Walk at Clarice Smith Performing Arts Center and Perimeter Landscape Improvements University Boulevard	Landscape
W_L3	Garden of Peace and Friendship - Phase 2	Landscape
W_L4	Botanical Garden and Landscape Improvements - Phase 1	Landscape
W_L5	Arboretum Outreach Center Landscape Improvements	Landscape
W_L6	Field Turf Extension and Site Improvements	Sports Field
W_L7	Botanical Garden - Phase 2	Landscape
W_T3	Stadium Drive and Golf Course Gateway Enhancements	Landscape & Transportation
W_T5	Stadium and Farm Drives Enhancements	Transportation

Planned Demolitions			
July 2017 - December 2020			
Building #	Building	District	GSF
020	Motorcycle Storage Building	E	416
091	Chemistry Building Wing 1	NE	115,350
210	Plant Operations & Maintenance Storage	E	499
430	Metzerott House (4103)	N	1,965
803	Adelphi Road Office Annex	OP	4,818
Total			123,048

Planned Demolitions			
January 2021 - December 2030			
Building #	Building	District	GSF
003	Service Building	E	84,029
006	Building 006	E	20,165
011	Building 011	E	9,081
045	Instructional Television Facility	NE	3,082
051	Worcester Hall	S	33,541
054	Preinkert Hall	S	28,237
065	Carroll Hall	S	26,470
067	Satellite Central Utilities Building (SCUB 2)	S	13,664
069	Wicomico Hall	S	27,684
070	Caroline Hall	S	26,959
085	Institute For Physical Sciences & Technology	NE	28,534
087	Central Animal Resources Facility	NE	7,163
093	Engineering Annex	NE	10,888
102	Agriculture Shed	NE	2,322
103	Animal Science Service Building	NE	1,397
110	Campus Farm - Cattle West Wing Demo	NE	2,090
116	Residential Facilities Building 116	E	1,440
119	Poultry Barn	NE	1,026
124	Grounds Material And Equipment Building	N	7,372
158	Varsity Sports Teamhouse	W	22,857
167	Golf Course Maintenance Office	GC	864
201	Leonardtown Office Building	E	10,018
204	Residential Facilities Building 204	E	869
207	Residential Facilities Building 207	E	733
213	Plant Operations & Maintenance Storage Bldg 2	GC	504
214	Plant Operations & Maintenance Storage Bldg 1	GC	504
227	Jull Hall	NE	17,574
238	Leonardtown Apartment	E	10,152
239	Leonardtown Apartment	E	12,582
240	Leonardtown Apartment	E	10,152
241	Leonardtown Apartment	E	6,291
242	Leonardtown Apartment	E	10,152
243	Leonardtown Apartment	E	5,076

244	Leonardtwn Apartment	E	13,452
245	Leonardtwn Apartment	E	13,452
246	Leonardtwn Apartment	E	13,452
247	Leonardtwn Apartment	E	13,452
248	Leonardtwn Apartment	E	13,452
249	Leonardtwn Apartment	E	13,452
250	Leonardtwn Community Center	E	3,660
309	Indoor Practice Facility	GC	864
312	Golf Course Chemical Storage Building	GC	836
313	Golf Course Storage Building 1	GC	200
314	Golf Course Repair Shop	GC	2,480
318	Golf Course Toilet Facility	GC	125
319	Golf Course Storage Building	GC	979
320	Golf Course Fertilizer Shed	GC	1,007
327	Grounds Herbicide/Pesticide Storage Building	N	235
328	Grounds Operations And Maintenance Building	N	3,157
344	Environmental Service Facility	N	7,752
369	Maryland Stadium Maintenance Building	W	3,319
381	Center For Young Children	NW	10,645
383	Paint Branch Building	OP	39,067
420	Maryland Baseball Annex	W	740
423	Grounds Storage Facility	S	240
813	Artemesia Building	OP	47,224
814	Cypress Building	OP	8,994

Total 655,708

Total both periods 778,756



Facilities Planning

2019 UPDATE
FACILITIES MASTER PLAN 2011-2030:

Existing Buildings

Legend

- Existing
- Projects Completed January 2011 - June 2019
- Buildings Under Construction
- Sites Under Construction (As of July 2019)

0 1/4 Miles

ATTACHMENT

A

Date: 10/9/2019



Facilities Planning

2019 UPDATE
FACILITIES MASTER PLAN 2011-2030:

**PLANNING PERIOD 1
(JULY 2019 - DECEMBER 2020)**

Legend

- Existing
- Planning Period 1
- Buildings Under Construction
- Sites Under Construction

0 1/4 Miles

ATTACHMENT

B

Date: 10/11/2019






Facilities Planning

2019 UPDATE
FACILITIES MASTER PLAN 2011-2030:

**PLANNING PERIOD 2
(JULY 2021 - DECEMBER 2030)**

Legend

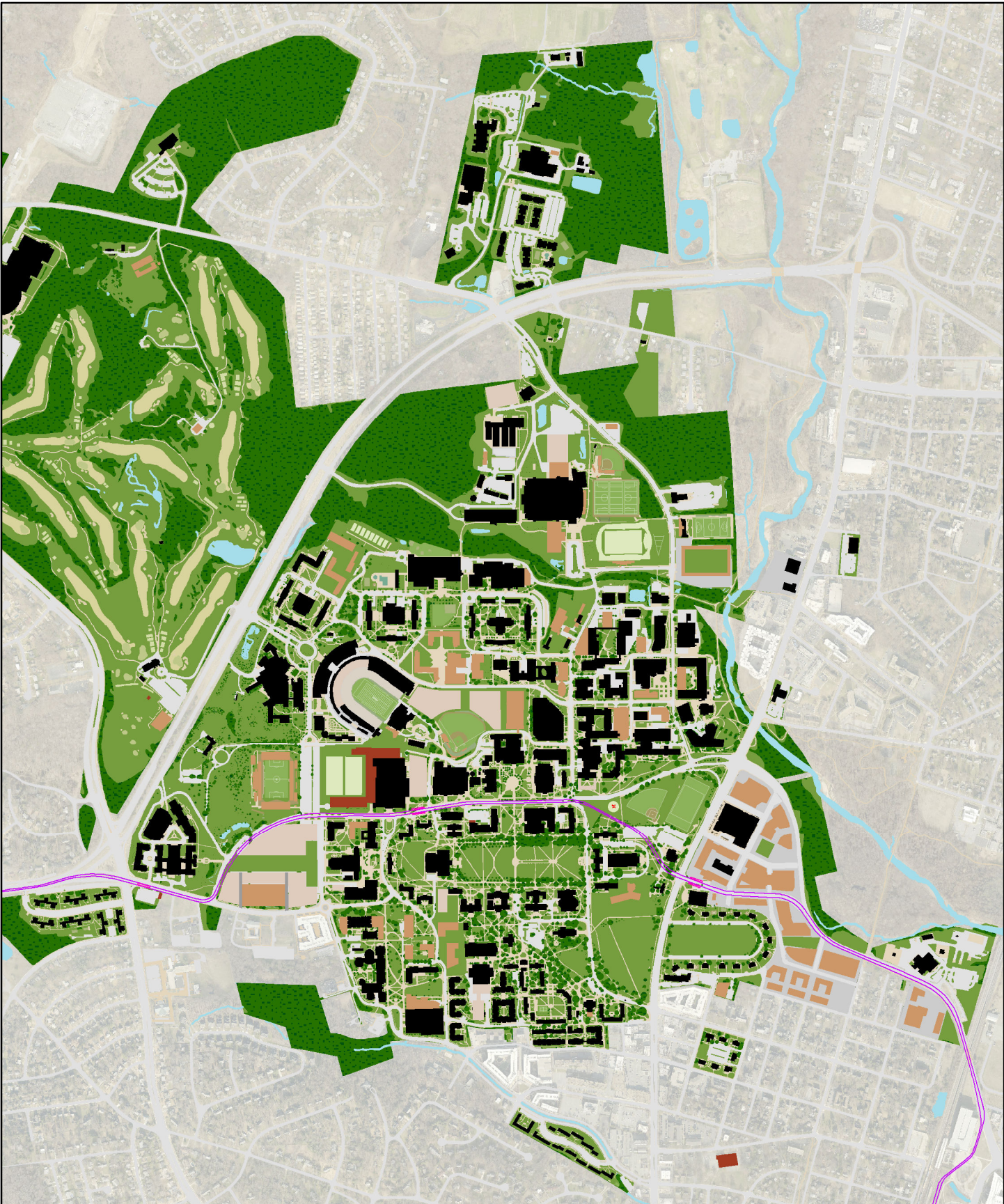
-  Existing
-  Planning Period 1 July 2016 - December 2020
-  Planning Period 2 January 2021 - December 2030



ATTACHMENT

C

Date: 10/11/2019



Facilities Planning

2019 UPDATE
FACILITIES MASTER PLAN 2011-2030:

FRAMEWORK PLAN - BEYOND 2030

Legend

- Existing
- Planning Period 1 July 2019 - December 2020
- Planning Period 2 January 2021 - December 2030
- Planning Period Beyond January 2030+



ATTACHMENT

D

Date: 10/11/2019